



Network Adapters

Market leader for fiber adapters with fast, secure and reliable solutions.

From 100Mbps to 10 Gigabit, Allied Telesis seamlessly connects desktops, laptops, servers, and thin clients with a continually expanding portfolio of high-quality, reliable, and cost-effective network adapters.

As the worldwide leader in fiber adapter cards Allied Telesis continues to offer the highest-quality cards at competitive prices. With offerings from 100FX to 10 Gig, we have a card to fit your secure fiber optic network needs.



10G Adapters

ANC/DNC Series

Large file transfers, multimedia support and more and more users are causing high demand on network resources. These issues are taxing on bandwidth.

Allied Telesis single and dual-port, 10 Gigabit adapters offer cost-effective solutions for your file or application server, workstation, or desktop.



DNC10LC

The Allied Telesis DNC10LC fiber network adapter card utilizes a fixed LC optical connection for enhanced physical security. The 10G DNC10LC is an ideal fit for federal and other mission-critical applications, where security is of paramount importance.

| FEATURES | | SFP+ 10 GIGABIT | | RJ-45 10 GIGABIT | 10G FIBER |
|--------------------------------|-------------------------------|--|-----------------|------------------|-----------|
| | | ANC10S/2 | DNC10SP | DNC10T | DNC10LC |
| BUS TYPE | | PCIe (x8) | PCIe (x4) | PCIe (x4) | PCIe (x4) |
| PORTS AND MEDIA SUPPORT | Connector type | 2 x SFP+ | SFP or SFP+ | RJ-45 | LC |
| | Fiber type | MMF, SMF | MMF, SMF | | MMF |
| | Max distance | Depends on SFP+ | Depends on SFP+ | 100 m | 550 m |
| QoS | IEEE 802.1p priority queues | ■ | ■ | ■ | ■ |
| | TCP/IP checksum CPU offload | ■ | ■ | ■ | ■ |
| | Jumbo frames | ■ | ■ | ■ | ■ |
| | Link aggregation support | ■ | ■ | ■ | ■ |
| | Link aggregation failover | ■ | ■ | ■ | ■ |
| PERFORMANCE | iSCSI Boot | ■ | | | |
| | Managed boot agent (PXE/UEFI) | 2.1 | ■ | ■ | ■ |
| | VLAN support | ■ | ■ | ■ | ■ |
| | Windows Server Teaming | ■ | ■ | ■ | ■ |
| | Windows Server 2016 | ■ | ■ | ■ | ■ |
| DRIVER SUPPORT | Windows Server 2019 | ■ | ■ | ■ | ■ |
| | Windows 10 | ■ | ■ | ■ | ■ |
| | Linux | ■ | ■ | ■ | ■ |
| IPv4/IPv6 SUPPORT | | ■ | ■ | ■ | ■ |
| DIAGNOSTICS | | LEDs | ■ | ■ | ■ |
| PHYSICAL | | Low profile bracket and full height provided | ■ | ■ | ■ |

SFP/SFP+ Optics
Learn more about Allied Telesis pluggable optics.

Desktop/Workstation/Server



29xx Series

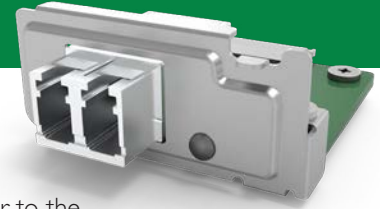
Allied Telesis 29xx network adapters provide the maximum possible bandwidth and bus efficiency with the benefits of low-power consumption. They include a comprehensive Microsoft Windows utility which performs detailed tests, diagnostics and analysis.

| FEATURES | | GIGABIT COPPER | | COPPER AND FIBER |
|--------------------------------|--|----------------|-------------|--------------------|
| | | 2912T | 2911T/2 | 2914GP |
| BUS TYPE | | PCIe (x1) | PCIe (x1) | PCIe (x1) |
| PORTS AND MEDIA SUPPORT | 10/100/1000T PoE | | | IEEE 802.3at (30W) |
| | 10/100/1000T | ■ | ■ (2 ports) | |
| | 100FX | | | SFP |
| | 1000X | | | 1000Mbps SFP |
| FIBER TYPE | | | | 100/1000 SFP |
| MAX FIBER DISTANCE | | | | Depends on SFP |
| QoS | IEEE 802.1p priority queues | ■ | ■ | ■ |
| | TCP/IP checksum CPU offload | ■ | ■ | ■ |
| | Jumbo frames | ■ | ■ | ■ |
| PERFORMANCE | Windows Server Teaming | ■ | ■ | ■ |
| | Wake-on-LAN | ■ | ■ | Copper port |
| MANAGEMENT | Managed boot agent (PXE/UEFI) | 2.1 | 2.1 | 2.1 |
| | VLAN support | ■ | ■ | ■ |
| | Advanced power management (ACPI) | ■ | ■ | ■ |
| | SNMP | ■ | ■ | ■ |
| SECURITY | IPSec offload | ■ | | |
| DRIVER SUPPORT | Windows Server 2012 | ■ | ■ | ■ |
| | Windows Server 2016 | ■ | ■ | ■ |
| | Windows Server 2019 | ■ | ■ | ■ |
| | Windows 10 | ■ | ■ | ■ |
| | Linux | ■ | ■ | ■ |
| IPv6 SUPPORT | | ■ | ■ | ■ |
| DIAGNOSTICS | LEDs | ■ | ■ | ■ |
| | Virtual cable tester | ■ | ■ | |
| PHYSICAL | Low profile bracket and full height provided | ■ | ■ | ■ |

SFP/SFP+ Optics

Learn more about Allied Telesis pluggable optics.





27M2 29M2

The Allied Telesis 27M2 and 29M2 network adapters are ideal for fiber-to-the-desktop networks that depend on secure and reliable systems. These compact form-factor adapters are designed for specific HP & DELL systems. Please contact your sales person for more information.

| FEATURES | | GIGABIT FIBER | | | | FAST ETHERNET FIBER | |
|-------------------------|--|---------------|----------------|-----------------|------------------------|---------------------|-----------|
| | | 2914SX /LC/SC | 2914SP | 2911SX LC/SC/ST | 2911SFP/2 | 2711FX LC/SC/ST | 2712FX |
| BUS TYPE | | PCIe (x1) | PCIe (x1) | PCIe (x1) | PCIe (x1) | PCIe (x1) | PCIe (x1) |
| PORTS AND MEDIA SUPPORT | 10/100/1000T PoE | | | | | | |
| | 10/100/1000T | | | | | | |
| | 100FX | | SFP | | | LC, SC, ST | SC |
| | 1000X | LC, SC | SFP | LC, SC, ST | 1000Mbps SFP (2 ports) | | |
| FIBER TYPE | | MMF | 100/1000 SFP | MMF | Depends on SFP | MMF | MMF |
| MAX FIBER DISTANCE | | 220 m / 500 m | Depends on SFP | 220 m / 500 m | Depends on SFP | 2 km | 2 km |
| QoS | IEEE 802.1p priority queues | ■ | ■ | ■ | ■ | ■ | ■ |
| | TCP/IP checksum CPU offload | ■ | ■ | ■ | ■ | ■ | ■ |
| | Jumbo frames | ■ | ■ | ■ | ■ | ■ | ■ |
| PERFORMANCE | Windows Server Teaming | ■ | ■ | ■ | ■ | ■ | ■ |
| | Wake-on-LAN | ■ | ■ | | | ■ | ■ |
| MANAGEMENT | Managed boot agent (PXE/UEFI) | 2.1 | 2.1 | 2.1 | 2.1 | 2.1 | 2.1 |
| | VLAN support | ■ | ■ | ■ | ■ | ■ | ■ |
| | Advanced power management (ACPI) | ■ | ■ | ■ | ■ | ■ | ■ |
| | SNMP | ■ | ■ | ■ | ■ | ■ | ■ |
| SECURITY | IPSec offload | | | | | | ■ |
| DRIVER SUPPORT | Windows Server 2012 | | | ■ | ■ | | |
| | Windows Server 2016 | | | ■ | ■ | | |
| | Windows Server 2019 | | | ■ | ■ | | |
| | Windows 10 | ■ | ■ | ■ | ■ | ■ | ■ |
| | Linux | ■ | ■ | ■ | ■ | ■ | ■ |
| IPv6 SUPPORT | | ■ | ■ | ■ | ■ | ■ | ■ |
| DIAGNOSTICS | LEDs | ■ | ■ | ■ | ■ | ■ | ■ |
| | Virtual cable tester | ■ | ■ | ■ | ■ | ■ | ■ |
| PHYSICAL | Low profile bracket and full height provided | ■ | ■ | ■ | ■ | ■ | ■ |

Advanced Power Management (ACPI)

ACPI is part of the environmental control initiative for computers. Allied Telesis adapter cards support ACPI, which places the system in a low power state when it is not receiving or transmitting data.

Wake-on-LAN (WoL)

WoL is a feature of adapter cards that allows a computer fitted with a card to be remotely powered-on. The computer receives a special data packet via the network port that will cause the computer to boot. This, coupled with PXE support, allows network administrators to gain complete access to all computers on their networks.

Preboot Execution Environment (PXE) Support

PXE allows network administrators to perform preboot procedures on a system, such as installing an operating system, running a virus checker, or downloading a predefined system configuration. PXE support included in Allied Telesis adapter cards allows a workstation or computer to boot from a remote server connected to the network prior to booting from the local hard drive.